

UTPADAN – UDYAMITA – SAHKAR

ANNUAL REPORT 2023–2024



“Do not look the other way; do not hesitate. Recognise that the world is hungry for action, not words. Act with courage and vision.”

~~~

**Nelson Mandela**

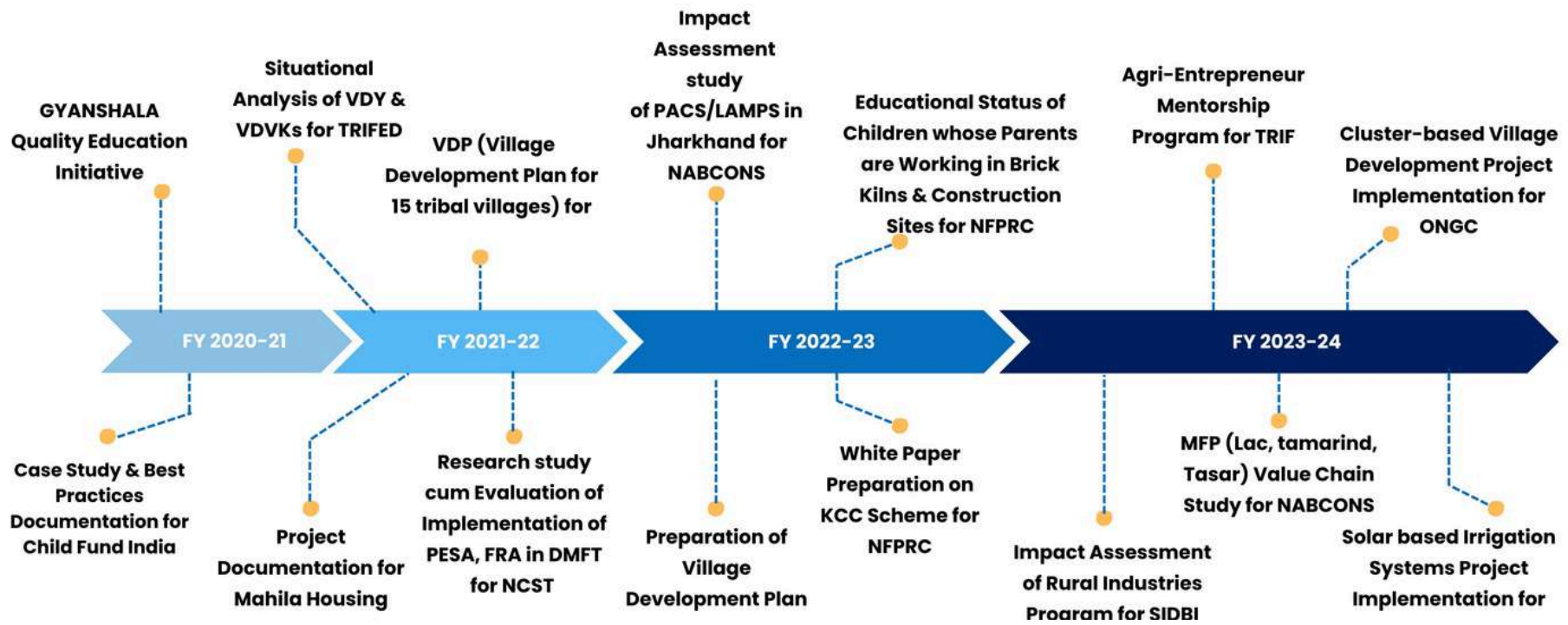


**ISDG RESEARCH FOUNDATION**

**SUSTAINABILITY FOR A BETTER WORLD**

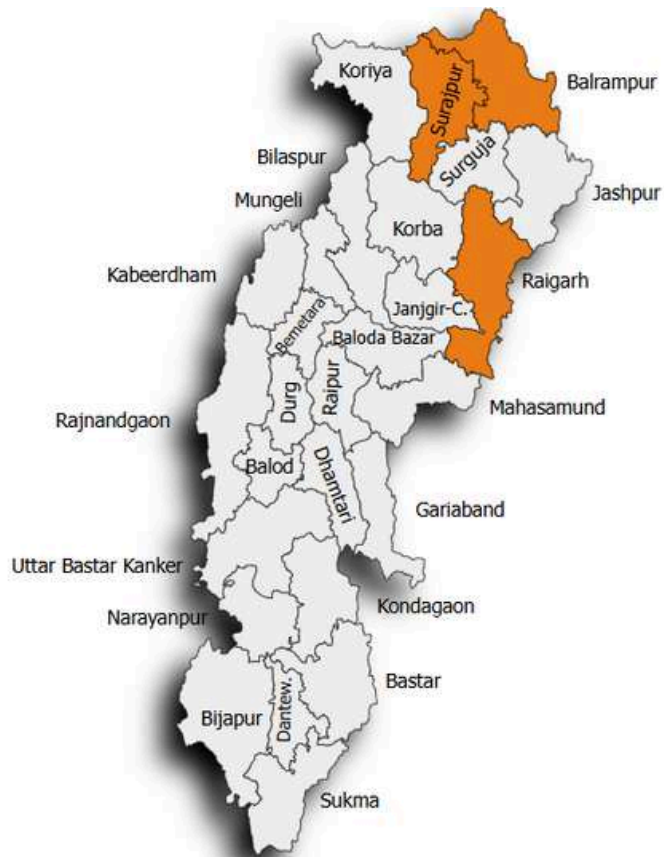


# OUR JOURNEY





# OUR PRESENCE



# CONTENTS

|                                               |           |
|-----------------------------------------------|-----------|
| <b>I. Director's Message</b>                  | <b>1</b>  |
| <b>II. An Introduction</b>                    | <b>3</b>  |
| <b>III. Observing FY2023-24</b>               | <b>5</b>  |
| <b>IV. Primary Education</b>                  | <b>7</b>  |
| <b>V. Agriculture &amp; Rural Development</b> | <b>15</b> |
| <b>VI. Skill &amp; Micro-Entrepreneurship</b> | <b>31</b> |
| <b>VII. Development Research</b>              | <b>41</b> |
| <b>VIII. Our Financials</b>                   | <b>49</b> |
| <b>IX. Our Legal Status</b>                   | <b>51</b> |
| <b>X. Testimonials</b>                        | <b>53</b> |
| <b>XI. Media</b>                              | <b>54</b> |



# DIRECTOR'S MESSAGE



We have come to a transient understanding that Rural Development and Poverty Elimination follow a definite track of "Utpadan, Udyamita, and Sahkar." These initiatives have to be made with utmost planning in a particular cluster in a manner suitable to the local capacity, needs, and aspirations.

The absence of any one intervention will leave the entire chain of efforts incomplete and might require a redo at a later stage.

Given that we are a country with unbounded aspirations and limited resources, we have a strong onus to plan our best in tandem with people at every front of the planning. We regard "Shodh" highly and go every extra mile to do good planning just to ensure that we bring the best to the people with whom we work, make use of the minuscule resources we have, and make

**"A NATION IS ADVANCED IN PROPORTION TO EDUCATION AND INTELLIGENCE SPREAD AMONG THE MASSES"**

**-SWAMI VIVEKANANDA**

our lives as meaningful as we can while bringing larger meanings to the community and the country.

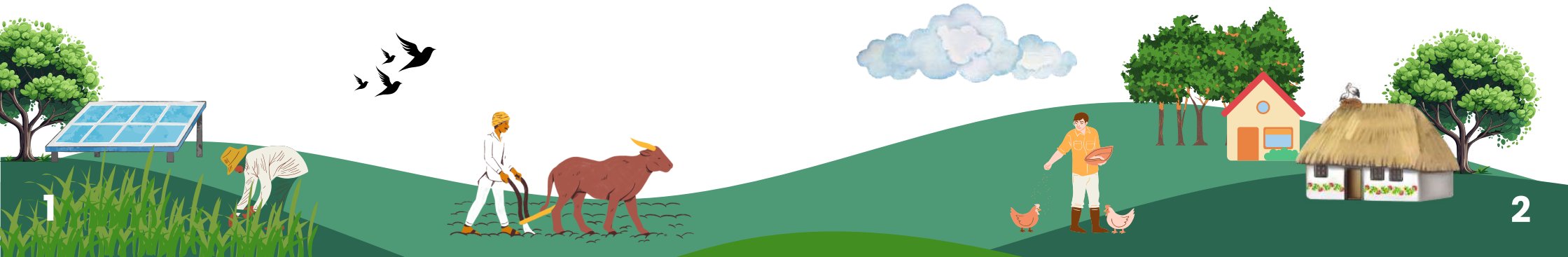
From poverty alleviation for tribal farmers through Solar based community irrigation, Farmer Field Schools, Natural Farming, Natural Resource Management, Income generating activities, Capacity Building, Agri Entrepreneurs Mentoring to the development of Women Educators, ISDG Research Foundation covers a large cross-section of social aspirations.

To top these efforts, our intensive

research and exploration of context-based solutions give impetus to our initiatives.

We look forward to engaging with skill development and micro-entrepreneurship in a further holistic manner in the years to come. We extend our heartfelt gratitude to our Partners, Donors, Advisers, and Well-wishers. Your empathy and support have enabled us to make a difference in the lives of deserving communities.

**-Capt. Kumar Devashish**



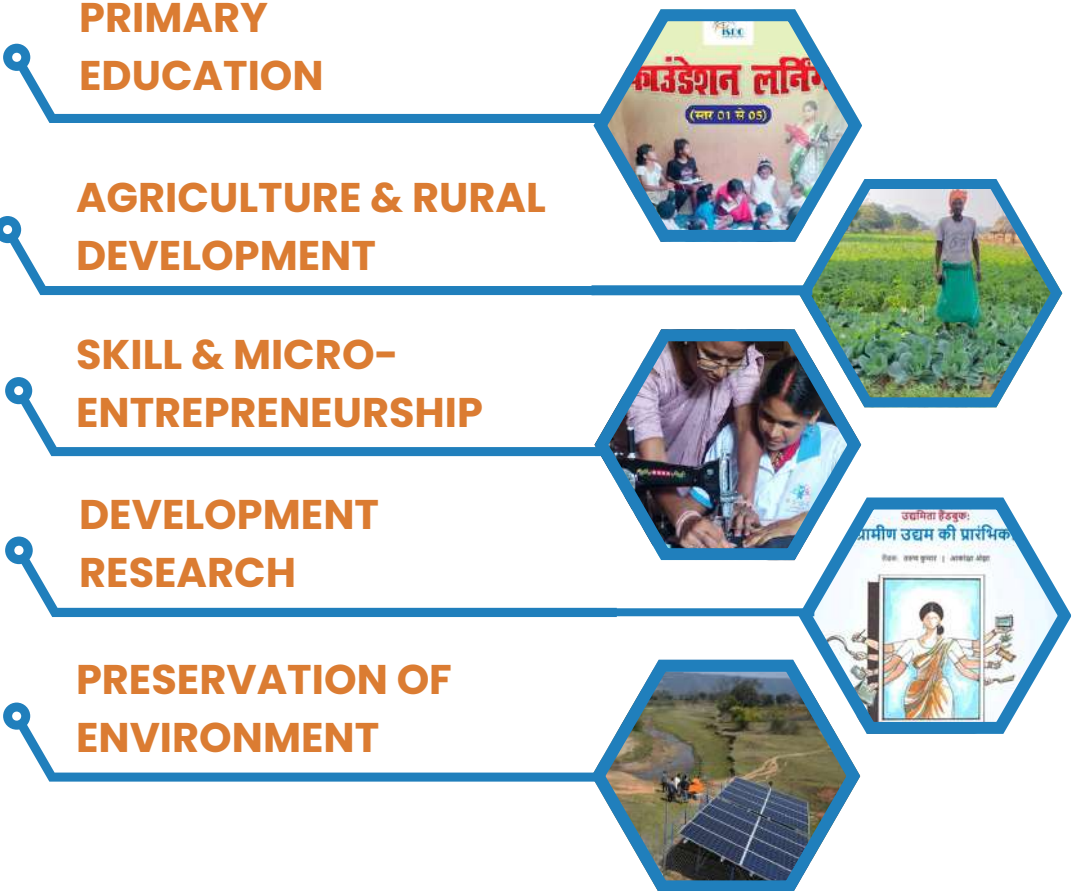


# AN INTRODUCTION

ISDG Research Foundation (IRF) is a non-profit organization registered as a Section-8 company under the Indian Companies Act, 2013. It is a grassroots foundation focusing on community solutions related to Primary Education, Agriculture, Rural Development, Skill & Micro-Entrepreneurship, Development Research, and Preservation of Environment. Our drive for sustainability appreciates that solutions must be inclusive and evolve from the community itself.

  
**OUR VISION**  
Sustainability for a better world. Our vision is a society where everyone has enough capacity, has attained self-reliance, and has the ability to give.

  
**OUR MISSION**  
Enabling community through continuous participatory observation, dialogue, research, innovation, and action.



# OBSERVING 2023

The fiscal year 2023–24 was a year of significant community participation, growth and development for our organization. Despite facing numerous challenges, during critical implementation periods, we achieved remarkable progress in our initiatives.

One of our key accomplishments was the establishment of strong community groups such as Water User Groups and Producer Groups.

These groups played a pivotal role in ensuring the effective implementation of our programs, fostering community participation, and maximizing impact.

In our pursuit of growth and learning, we made strategic decisions to engage in partnerships that were economically challenging, but offered valuable opportunities for development.

We embraced these experiences as intangible assets, leveraging the knowledge gained to benefit the broader community.

A few key highlights from FY2023–24 remain our successful expansion to Chhattisgarh, broadening our impact and reaching new communities. We formed strategic partnerships that yielded valuable lessons and led us towards wider engagement opening new avenues of impact creation.

Our efforts have reaffirmed our commitment to empowering communities through our pillars of **Utpadan** (production), **Udyamita** (Entrepreneurship), and **Sahkar** (Cooperation).

As we move forward, we remain dedicated to our mission of building **Sustainability for a better world** through further strengthening our impact, expanding our reach and empowering communities towards self-reliance, resilience and inclusivity.





# PRIMARY EDUCATION

**125+**  
Female  
Community  
Educators

**2000+**  
Underprivileged  
Children  
Reached

**250+**  
Hours of Virtual  
Trainings  
Conducted

**03**  
Children  
Friendly  
Publications





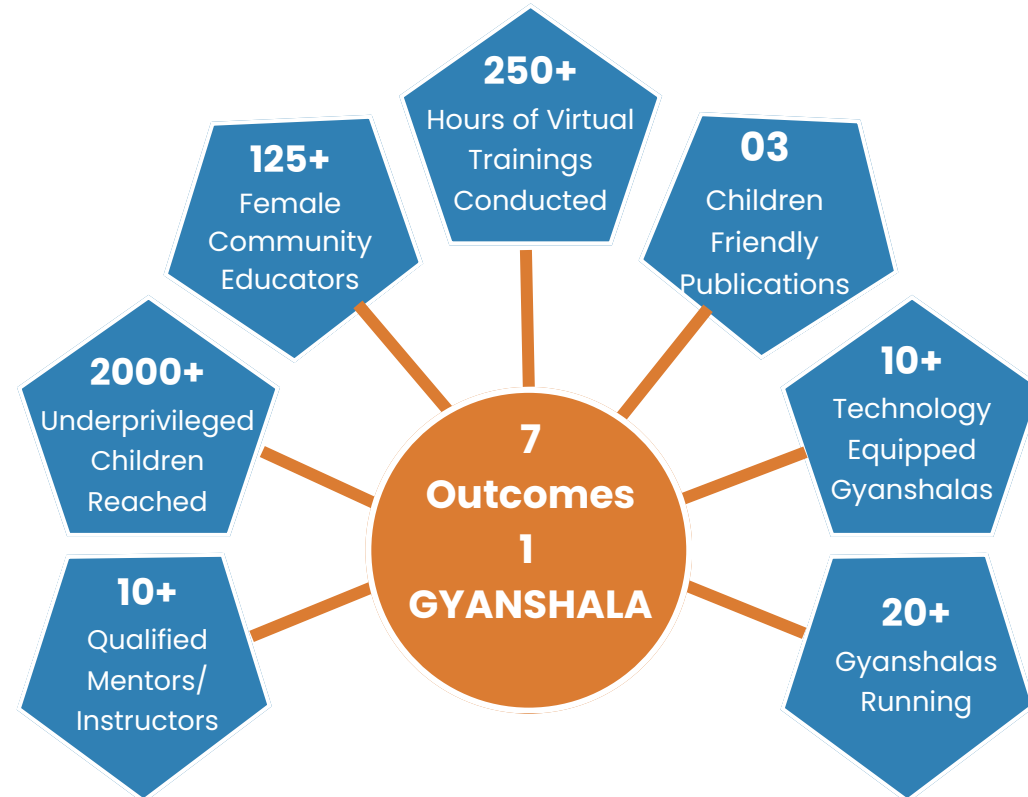
## GYANSHALA: OUR FLAGSHIP PROGRAM

Launched in September 2020, Gyanshala is the ISDG Research Foundation's flagship program. It tackles the challenge of educational disparity in rural and tribal communities, particularly for girls in grades 1-5. Gyanshala upholds the National Education Policy (NEP 2020) to ensure a holistic learning experience. We address the specific needs of each community by developing locally relevant teaching resources and focusing on closing the educational gap for children who require additional support.

### Gyandoots: Our Engine of Change

The cornerstone of Gyanshala's success is the "Gyandoots" - locally educated young women carefully selected and trained to become educational leaders within their communities. Through a year-long program (online and offline), they gain the knowledge and skills to deliver high-quality education. Gyandoot holds a deep understanding of their community's needs and conducts daily 1.5-hour after-school classes, making education accessible and fostering sustainable change.

## IMPACT & OUTCOMES





## Geeta's Gyanshala: A Journey of Empowering Girls Through Education



Geeta Devi,  
Community Educator,  
Sondimra village,  
Ramgarh district

Gyanshala, a flagship initiative of the ISDG Research Foundation, is transforming the lives of young girls in rural India by breaking the cycle of poverty and limited opportunity through education. The inspiring journey of Geeta Devi, a determined young Gyandoot (community educator) from Ramgarh district, Jharkhand, exemplifies the program's mission of empowering girls and women as both learners and educators.

Geeta's journey began in Gattigarha, a remote village in Jharkhand, where a lack of nearby schools posed a significant barrier to her education. She moved to her maternal grandfather's house in Ranchi, where she started tutoring students to support her own education.

Geeta secured the top position in her 10th class exams and went on to complete her High School from Ranchi, that was completely self-funded. Despite her academic success, Geeta faced multiple challenges. Following her marriage in 2015, she moved to Sondimra village where she encountered financial & societal constraints that delayed her education. Initially, her studies suffered due to the lack of support from her new environment. However, her educational aspirations and resolve,

impressed her in-laws, who eventually provided her unwavering encouragement. In Sondimra, Geeta observed the lack of basic literacy among children. The main occupation being horticultural plantations, most men of the village had migrated to the cities in search for better work. Hence, most households in the village were run by women, who could hardly find any time to attend to the education of their children. Geeta became increasingly passionate about improving her community's educational landscape. But how, she still faced the dual challenges of limited financial resources and widespread parental ignorance regarding the importance of quality education. Around this time, she learned about the Gyanshala program from Suchitra Didi, a local social worker. The program's focus on community education aligned with her aspirations. Gyanshala equipped Geeta with valuable training, allowing her to become a skilled teacher. Geeta Devi, now teaches 42 boys and girls in class 1 - 7 across two shifts. The children of Sondimra village are no longer found goofing around post school, they arrive at their Gyanshalas, excited about the learnings for the day.

Geeta's dedication to her students was evident as she managed classes in two separate shifts, a testament to her commitment to education.

From her humble beginnings in Gattigarha to becoming a community leader and advocate for education, Geeta's story is a powerful testament to resilience, determination, and the ripple effect of quality education.



Children participating in Drawing Competition

Children writing practice tests before exams



Children attending after school lessons

Children participating in Fancy Dress Competition at Dussehra Celebrations





Children attending after school classes at Sunita Bihaan's Gyanshala in Tumbaguttu, Namkum



Children attending Physical Fitness Workshop at Asha Lakra's Gyanshala in Jashpur



Children learning English Vocabulary through cards at Kiran Devi's Gyanshala in Ramgarh



Children celebrating Saraswati Pooja at Arti Sahu's Gyanshala in Dharsiwan, Raipur





# AGRICULTURE & RURAL DEVELOPMENT



**1000+**  
Women Farmers &  
**2500+**  
Farmers  
empowered

**500 MT**  
Crop Production  
Enhanced  
(2023-24)

**₹20k-₹22k**  
Income  
Enhancement  
per HH  
(per cropping  
Season)

**380+**  
**acres**  
Additional area  
brought under  
Cultivation

**280+ acres**  
Additional area  
Irrigated through  
Solar Panels &  
Pumps



## INTEGRATED DEVELOPMENT INTERVENTIONS

Community is the key to partnering inclusive Rural Development through Production, Entrepreneurship, and Cooperation at the last miles. Agricultural development, Sustainable capacity building, livelihood resilience, economic empowerment, entrepreneurship, and cooperation development remain the key focus of our work. Our team worked together towards the successful implementation of the following projects during FY2023-24:

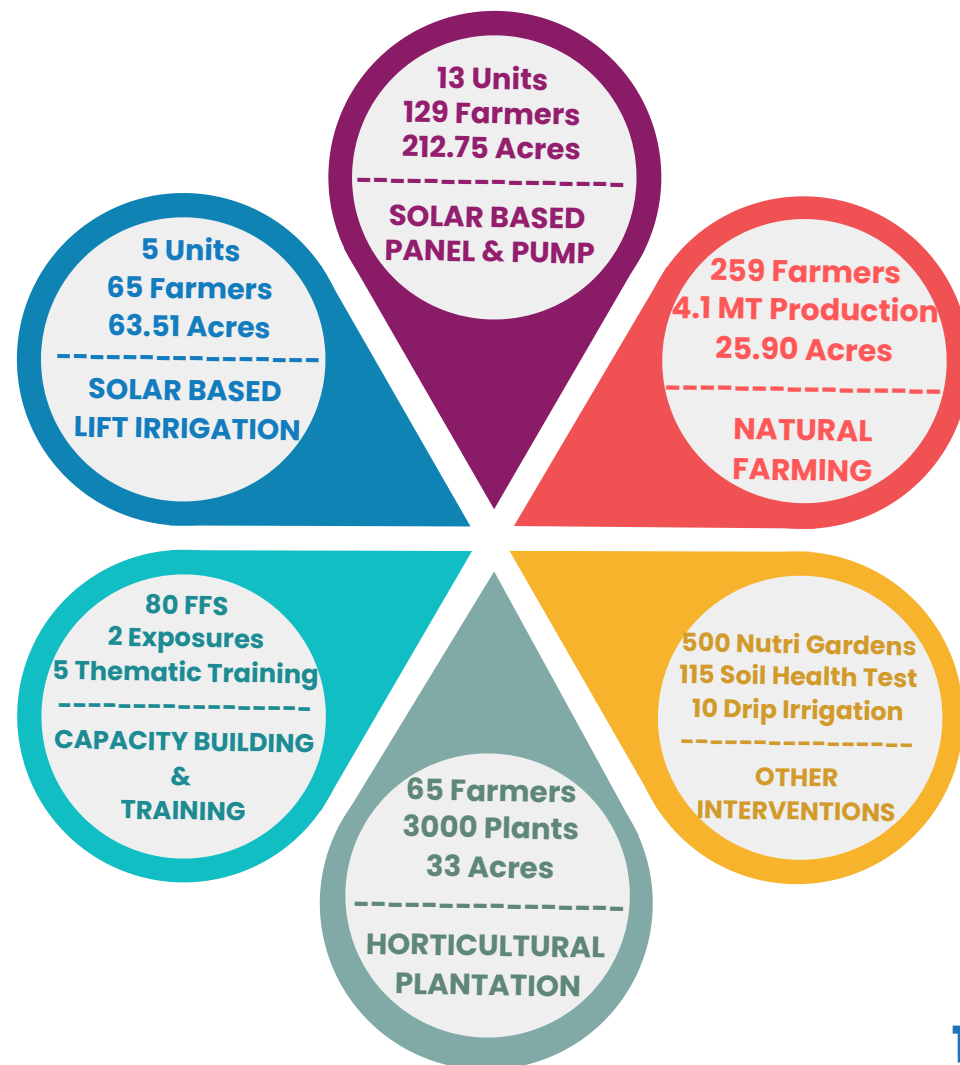
### A. Solar-based Irrigation Project under SECI:

Outward distress migration, a stark reality in Gumla district, often stemmed from limited agricultural opportunities and a struggle to secure a sustainable livelihood. The Cluster-focused Solar-based Irrigation Project, with funding support from SECI (Solar Energy Corporation of India Ltd.), stepped in to address this very challenge. Our team successfully implemented the project in the Bishunpur cluster of Gumla district,



Jharkhand state, covering 339.16 acres of cultivable area while positively impacting 1,142 farmers across four villages. Through a series of well-targeted interventions, the project empowered farmers with the resources and knowledge they needed to thrive.

## INTERVENTIONS & OUTCOMES





## From Seasonal Struggle to Year-Round Abundance: The Uplifting Impact of Natural Farming in Bishunpur Cluster



Jamuna Oraon, Farmer, Bishunpur village

For generations, farmers in the Bishunpur Cluster faced a recurring challenge: limited crop production due to seasonal constraints and water scarcity. Most farmers could only cultivate during the Kharif season, leaving their land idle for much of the year. This not only limited their income but also restricted access to a diverse and nutritious diet for their families. By introducing Solar Based Irrigation Project under SECI (Solar Energy Corporation of India Ltd), the intervention has empowered farmers and revitalized the agricultural landscape of Bishunpur Cluster. As a result, 57.90 acres of additional area has been brought under cultivation in Bishunpur cluster through natural farming and nutritional gardens. While the total production from natural farming totals about 149.42 MT, and from nutritional garden stands at 62 MT.

### Horticultural Abundance:

With water security in place, the project introduced the concept of horticultural farming. These plants not only provided the families with a year-round supply of fresh and nutritious vegetables but also offered them with a source of income.

## IMPACT STORIES

**Karmi Oraon** from Bishunpur village grows vegetable crops all around the years on her plot of 1 acre after the installation of the solar-based panel and pump. Her son used to migrate to the Patna city in search of seasonal work during the winters but since last year he has decided to stay and help his mother on the fields. They grow vegetables using natural farming practices which brings them an additional average monthly income of ₹8k - ₹10k for their family.



**Sumari Oraon** from Bishunpur-Karamtoli experienced a "three-layered benefit" from her bountiful potato harvest of 4 quintals. First, her family had a secure supply for their own needs. Second, she was able to sell some of the harvest in the market, generating income that helped her cover her mother-in-law's hernia surgery in a nearby city. Finally, the remaining potatoes were stored as seeds for the next planting season, ensuring future harvests.

**Bandhanu Oraon** from Serka regularly attended the Kisan Pathshalas (FFS) where he learned vital techniques like grafting, staking, efficient crop spacing, and irrigation intervals. When his field received water from the Solar based pump and panels, he prepared a mango farm where this newfound knowledge, previously unavailable, allowed Bandhanu to revive his struggling mango plants. All 50 mango plants he received are thriving, raising hopes for a fruitful future harvest.







Solar based Lift Irrigation System at Dhoibghat River in Bishunpur Karamtoli village in Gumla District



Farmers attending On-site Exposure visit to MASS Agriculture Training Center at Angara block, Ranchi



Sunita Devi from Serka village attending to her brinjal plants in her Kitchen Garden



Farmers of Chingri village attending Farmer Field School convened by the Agriculture Expert.



## INTERVENTIONS & ACTIVITIES

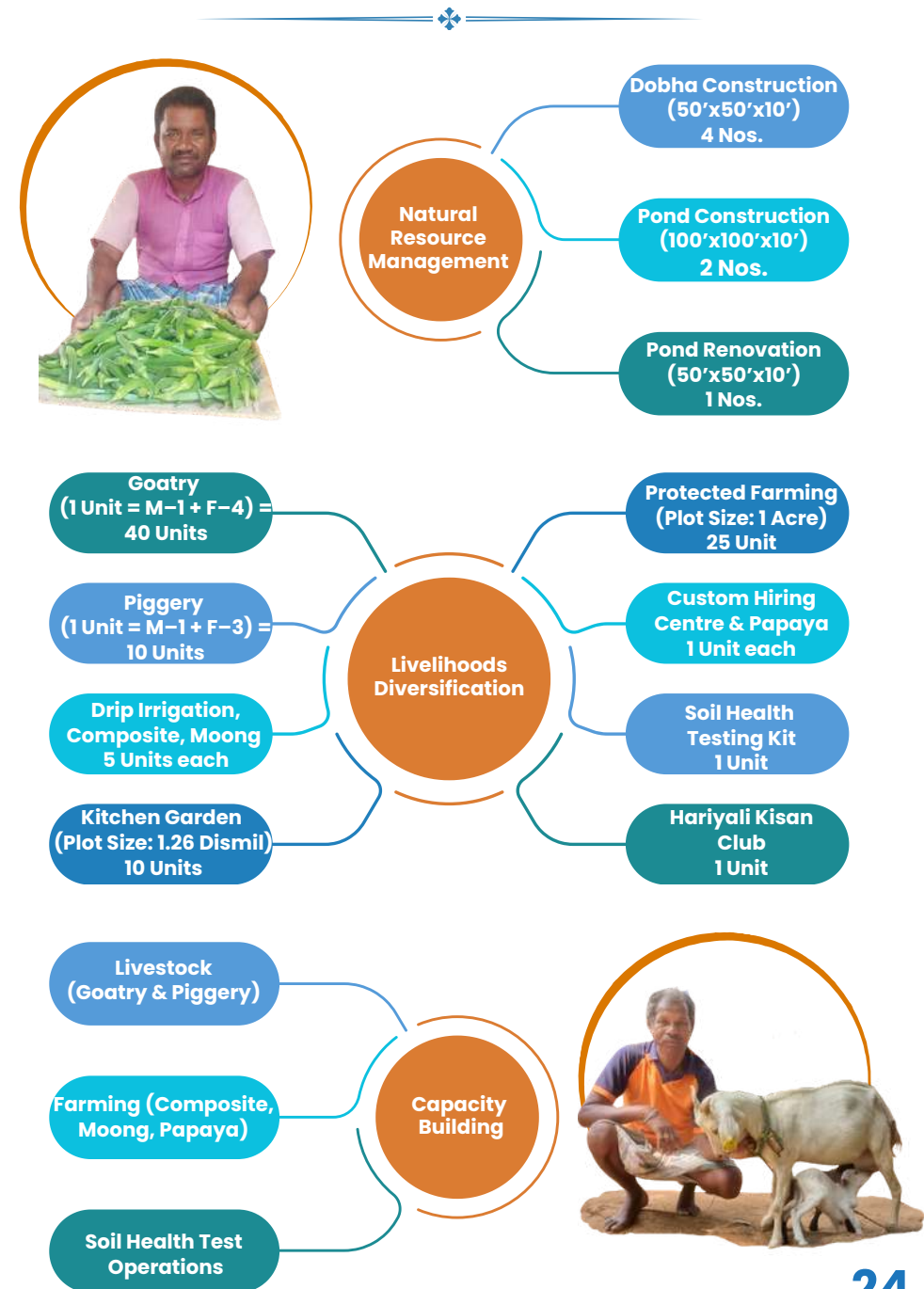
### B. Cluster-based Village Development supported by ONGC: Bishunpur Cluster, Jharkhand

The "Cluster Based Adaptive Village Development Plan for Migration Reduction among Tribal Communities in Bishunpur Cluster, Jharkhand" aimed to tackle the critical issue of outward migration within five villages of the Bishunpur Cluster in Jharkhand, namely Bishunpur, Chingri, Chipri, Serka and Range. By focusing on Natural Resource Management (NRM), Livelihoods Diversification, and Capacity Building, the project empowered 619 beneficiaries to envision a sustainable future where migration is a choice, not a necessity.

#### A Multi-Faceted Approach

The project successfully implemented a diverse range of interventions:

- **Enhancing Water Security:** Construction of new ponds (dobhas) increased water storage capacity by a significant 24,31,000 gallons across the project area.
- **Diversifying Livelihoods:** Introduction of goat rearing, Piggery, composite farming practices, protected farming nets, women-run kitchen gardens, papaya cultivation, drip irrigation & improved green gram sowing methods provided alternative income sources. A total of 11.63 acres were brought under cultivation through these initiatives.
- **Building Capacity:** Project awareness workshops, training sessions, and a mini digital soil testing lab with training for SHG women on business development equipped the communities with the knowledge and skills needed for long-term success.



## Measurable Progress

The project has yielded promising results:

- **Increased Irrigation and Cultivation:** An additional 13.50 acres received irrigation, leading to a total of 31.62 acres brought into cultivation.
- **Improved Productivity:** This resulted in an estimated additional production of 45.00 metric tonnes.
- **Community Empowerment:** The project generated 180 mandays of work, fostering a sense of ownership and community development, particularly among women.

## Looking Forward

While challenges remain, such as ensuring long-term sustainability and wider community adoption, the initial progress is encouraging. The upcoming phases aim to build upon these successes, empowering the communities of Bishunpur and paving the way for a brighter future where migration is a choice, not a necessity.



Women farmers from Hariyali Kisan Club learning the operations of the Soil Health Testing kit received under the project.

Bhaiya Ram Oraon at his newly constructed Dobha at Chingri that will facilitate Irrigation during water scare months



Flourishing Papaya Plantation of Vinay Oraon from Serka village grown using mulching and Drip Irrigation promoted under the intervention



**C. Cluster-based Village Development supported by ONGC: Parshurampur Cluster, Chhattisgarh**

The "Cluster Based Adaptive Village Development Plan for Migration Reduction among Tribal Communities in Parshurampur Cluster, Chhattisgarh" was designed to address the critical challenge of outward migration within the five identified villages (Parshurampur, Senduri, Augustpur, Rajapur, Jagarnathpur) of the Parshurampur Cluster in Surajpur District, Chhattisgarh, through NRM (Natural Resource Management), Livelihoods Diversification and Capacity Building. The project aims to empower these communities and create a sustainable future where migration becomes a choice, not a necessity.

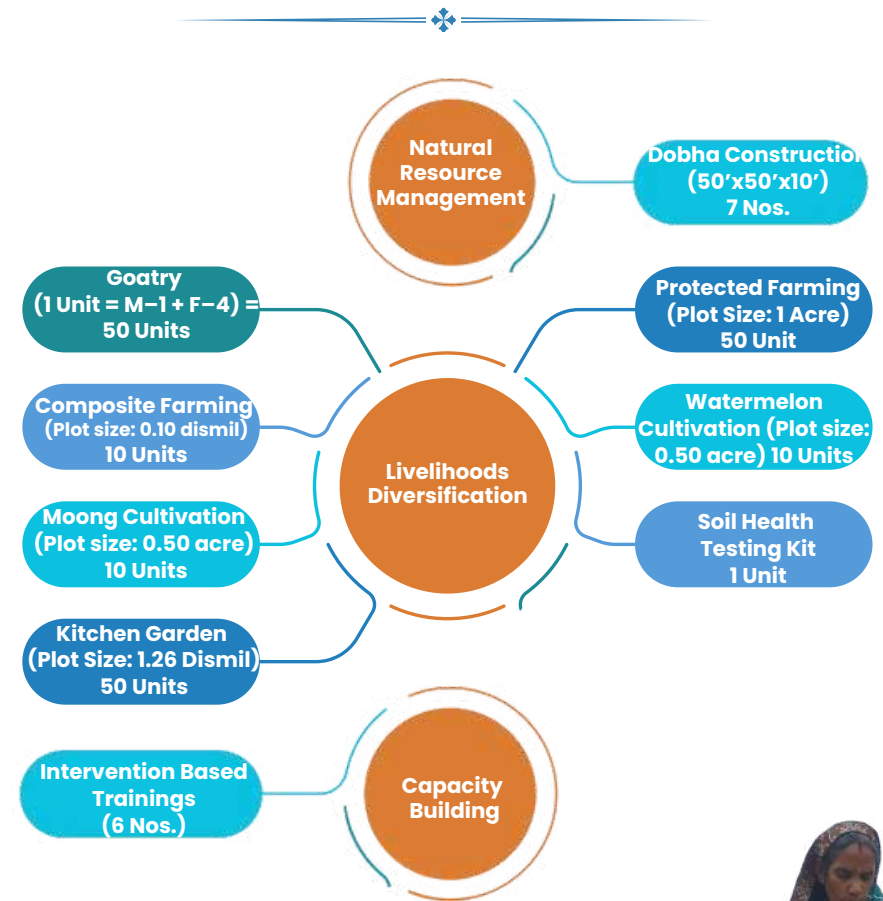
**Measurable Progress:**

- **Natural Resource Management:** Constructed small ponds (dobhas) enhancing water availability across 10 hectares. creating a total water storage capacity of 1,309,000 gallons.
- **Livelihoods Diversification:** Promoted high-value cash crops like watermelon, introduced goat rearing, established 11.63 acres of diversified crops, distributed protected farming nets and established women-managed kitchen gardens.
- **Capacity Building:** Conducted project awareness workshops and various training sessions; established a mini digital soil testing lab for SHG women for business development.

**Looking Forward:**

These interventions are expected to deliver a range of positive outcomes, including improved water security, increased agricultural productivity and diversification of income sources, enhanced soil health, and overall empowerment of the communities, particularly women.

**INTERVENTIONS & ACTIVITIES**







Atal SHG with their Soil Health Test Kit at Parshurampur village in Surajpur district, Chhattisgarh



Raimuniya Rajwade with her demonstrated plot for protected farming at Rajapur village



Farmer Nandlal's family with their abundant production of Green Gram (moong) from Jagarnathpur village



Farmer Baijnath Singh from Rajapur village with his newborn lambs bred under the Intervention.





# SKILL & MICRO- ENTREPRENEURSHIP

**Hariyali Kisan  
Club &  
Atal SHG** for  
Micro-  
Entrepreneurship  
Development

**800+**  
Farmers  
trained  
through Kisan  
Pathshalas

**1000+**  
Farmers Trained  
& Empowered  
through Skill &  
Knowledge



## SKILL & ENTREPRENEURSHIP INTERVENTIONS

Our "Livelihoods and Entrepreneurship" leg of work, directly aligns with the national vision of a Self-reliant India (Atmanirbhar Bharat). We believe that a thriving nation is built from the ground up, and our focus lies on empowering micro-enterprises, the backbone of the Indian economy.

We work alongside communities to design solutions for sustainable livelihoods, empowering them to build micro-businesses through mentorship and access to valuable resources. We equip these small businesses with the tools they need to flourish. We go beyond simple training, actively connecting them with essential resources, field experts and welfare programs. This comprehensive approach fosters a fertile ground for micro-enterprises to thrive, ultimately contributing to a more self-reliant India.

We have collaborated with the TRIF for successful implementation of the AEMP (Agri Entrepreneurship Mentoring Program) in FY2023-24.

### **AEMP (Agri Entrepreneurship Mentoring Program):**

Through a successful collaboration with TRIF (name of the collaborating organization), we empowered 65 aspiring Agri-Entrepreneurs (AEs) across three blocks in Jharkhand: Kersai and Kurdeg blocks in Simdega district and Bero block in Ranchi district. Our program provided comprehensive guidance and mentorship, supporting the AEs at every stage of their business development.

Under the guidance of Experts at ISDG Research Foundation, we implemented a ten-fold approach:

## TEN-FOLD INTERVENTIONS UNDER AEMP PROGRAM





Many of the aspiring Agri-Entrepreneurs (AEs) had a general idea for a business but lacked a clear direction. Our mentorship program, led by the experienced Mr. Tarun Kumar, addressed this need. The program started by understanding each AE's background and desired venture. This personalized approach allowed the program to tailor activities to their specific needs.

For instance, AEs received training on market research, empowering them to gather real customer data and build businesses with a focus on market demand. He fostered a spirit of perseverance throughout the program,

keeping the AEs motivated even when they faced challenges. These challenges included navigating complex government schemes, maintaining self-motivation, overcoming initial capital hurdles, and the natural fear of starting something new.

Despite the obstacles, the program achieved significant success. 20% of the AEs successfully launched their agricultural enterprises, while existing entrepreneurs used the program to expand and scale up their businesses. This demonstrates the power of mentorship in transforming vague ideas into thriving realities.

## TYPES OF ENTREPRISES SUPPORTED UNDER AEMP

| S.No. | Nature of Enterprise                   | Type of Enterprise               |
|-------|----------------------------------------|----------------------------------|
| 1     | <b>CSC/Electronics Group</b>           | CSC Center                       |
| 2     |                                        | Mobile Repairing                 |
| 3     |                                        | Electronic Shop                  |
| 4     | <b>Agri-Based Group</b>                | Nursery                          |
| 5     |                                        | Organic Pesticides Store         |
| 6     |                                        | Livestock Feed Store             |
| 7     |                                        | Vermi Compost                    |
| 8     |                                        | Agricultural Input Store         |
| 9     | <b>Retail Business Group</b>           | Grocery Store                    |
| 10    |                                        | Cloth Store                      |
| 11    |                                        | Packaging and Marketing Business |
| 12    |                                        | Hardware Store                   |
| 13    |                                        | Millet Bakery                    |
| 14    |                                        | Egg Retail Business              |
| 15    |                                        | Furniture & Utensil Store        |
| 16    | <b>Small-Scale Manufacturing Group</b> | Rice Mill                        |
| 17    |                                        | Puffed Rice Mill                 |
| 18    |                                        | Paper Plate Making               |
| 19    |                                        | Slipper Making                   |
| 20    |                                        | Oil Press Unit                   |
| 21    | <b>Vocational Group</b>                | Tailoring                        |
| 22    |                                        | Beauty Parlour                   |
| 23    |                                        | Salon                            |
| 24    |                                        | Café cum Mini Restaurant         |
| 25    |                                        | Fast Food Truck                  |
| 26    | <b>Animal Husbandry Group</b>          | Poultry Farm                     |
| 27    |                                        | Pig Farming                      |
| 28    |                                        | Fisheries                        |

## From Hardware to Haircuts:

### Sanjay's Success Story with AEMP



Sanjay Thakur, Agri-Entrepreneur, Kurdeg, Simdega district, Jharkhand

Sanjay Thakur from Kurdeg is a shining example of how guidance and hand-holding can go a long way in bringing dreams into reality. Sanjay previously ran a motor parts hardware store for over three years. Despite his effort, the business failed due to dwindling sales and mounting debt. When he joined the AEMP program, he had a few potential ventures in mind, such as a plant nursery or a motor repair shop.

However, the program helped him look at potential business opportunities in his village more closely. Through the program's market research training, he discovered a crucial gap in the Kurdeg market: there were no professional salons offering high-quality and trendy services, despite a clear demand for them. This untapped market presented a golden opportunity for Sanjay.

With the guidance under the AEMP mentor – Mr. Tarun Kumar (Field Expert cum Consultant), Sanjay was able to translate this opportunity into reality. The program's market research tool helped him solidify his understanding of the market gap. The Hub Managers from TRIF also helped him securing funds for his new venture. Sanjay applied for a loan of ₹1,00,000, which he supplemented with his savings. He got his loan approval basis the effective business plan he prepared in consultation with the mentor. Within just six months of embarking on this journey, Sanjay's salon was up and running. It has now started earning him initial profits.

Sanjay hopes that the salon offers a promising path towards a stable income, while he continues with farming to supplement his earnings and eventually clear his previous debts.

AEMP has not only empowered him to build a successful business in the present but has also ignited a hope for reviving his motor parts business in the future. Sanjay's story is a testament to the AEMP's ability to empower aspiring entrepreneurs with the skills and resources needed to not only identify opportunities but also translate them into thriving realities.



Agri-Entrepreneur Sanjay Thakur from Kurdeg block, Simdega district in his newly inaugurated Salon





Farmers participating in the Orientation cum Awareness Generation Program of Solar Based Irrigation System in Bishunpur



Farmers participating in Exposure visit to MASS Agriculture Training Centre at Angara Block, Ranchi District



Farmers participating in the Training on Horticultural Plantations at Demonstration Farm at Khunti District.



Farmers from Hariyali Kisan Club receiving training on Efficient Usage of On-Farm Equipment at Bishunpur





# DEVELOPMENT RESEARCH

**10000+**  
Households  
Reached

**25+**  
Research  
Studies  
Conducted

**15+**  
States  
Covered







At our core, we believe in the power of collaboration. We don't operate in isolation – we partner with communities, becoming active listeners and observers. This close collaboration allows us to conduct research that's not just driven by results, but also deeply empathetic to existing traditions, practices, and the potential for positive development. This approach ensures that our research isn't imposed from the outside, but rather emerges from a genuine understanding of the community's unique needs and aspirations. This year, we put this philosophy into action by collaborating with two public organizations on impactful studies. These collaborative efforts included the following studies:

### A. MFP Value Chain Study for NABCONS:

The "*Study on Value Chain of Tasar, Lac and Tamarind in the State of Jharkhand*" was assigned by NABARD Consultancy Services Pvt. Ltd (NABCONS) to the ISDG Research Foundation, Ranchi. As part of this study, we conducted detailed research on the composite value chain of three major MFPs in Jharkhand – Lac, Tamarind and Tasar.

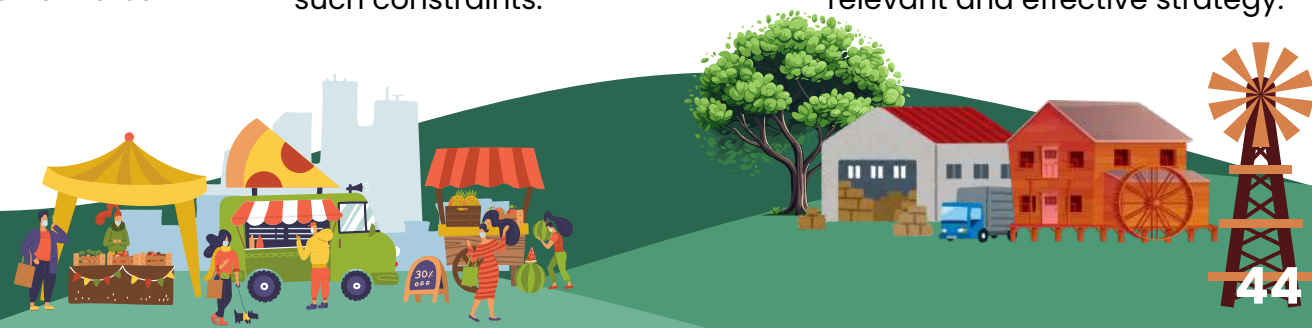
There is ample evidence available from the field and research studies that prove a positive relationship between the role of MFPs in livelihoods strengthening and vulnerability reduction of the most marginalized communities. Understanding the role of MFPs in Jharkhand is even more relevant owing to the rich forest

resources and abundance of MFPs.

Broadly, it encompassed the analysis of range of activities undertaken by various actors of the value chain, which included the primary producers, intermediaries, traders, processors, service providers etc., from the production stage to the final sale. Additionally, the study also captures the interrelationships between the actors, the value created at different levels, the key constraints in the value chain and suggestions to overcome those constraints. The entire study was carried out using the pro-poor perspective. That is, studying where the poor are in the value chain, what is their contribution, what are the key constraints they face and possible solutions to overcome such constraints.

### B. Impact Assessment of Rural Industries Program (SIDBI):

Several Empirical studies suggest that the development of the Rural Non-Farm Economy/ Sector, comprising mainly of micro and small enterprises, is instrumental in promoting employment (including self-employment), increasing rural income levels, and reducing rural poverty. This may also help in improving the labor productivity of the farm sector by pulling out the surplus labor from it. The improved labor productivity may have a positive effect on the wages and these together contribute towards the economic growth of the country. With nearly 65% of India's population residing in rural areas and the agriculture sector employing around 42% of the workforce, promoting rural industrialization remains a relevant and effective strategy.





The Small Industries Development Bank of India (SIDBI), recognizing the need for the development of rural industries conceptualized and launched its Rural Industries Programme (RIP) in the year 1993-94. RIP was an integrated program that aimed at the creation of industries and employment in rural areas through the promotion of viable and self-sustaining micro and small enterprises by harnessing local entrepreneurial potential.

The provision of integrated services under RIP included the selection of prospective entrepreneurs and facilitating them to self-employment ventures, identification of feasible projects and preparation of business plans, personal mentoring, and counselling, utilization of

appropriate technology through support services, facilitating loans and market linkages, helping in the commercial utilization of local resources.

The program implementation was successful as its all-around facilitation positively contributed towards a locally led, locally driven entrepreneurial ecosystem in the rural areas of the selected districts.

Along with the successes observed from the implementation, it's important to highlight the challenges and bottlenecks that would have caused some inconvenience or stunted the outcomes:

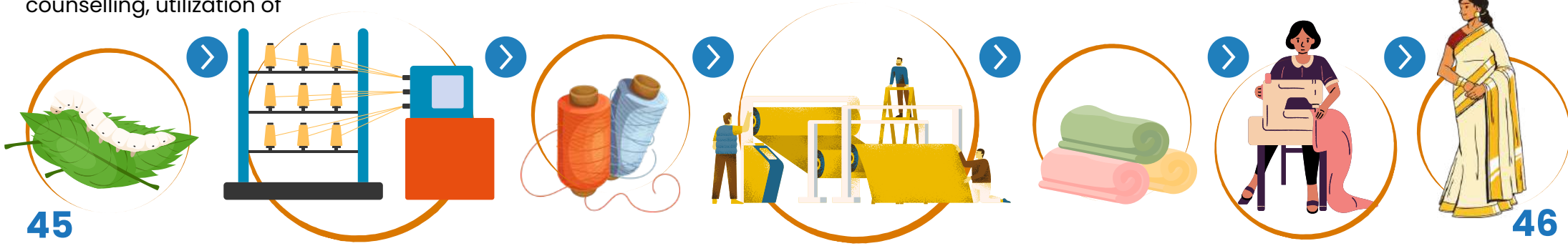
- Outstanding repayments.
- Additional payments needed by Beneficiaries.
- Lack of technical training to entrepreneurs.

Here are the findings reflecting Program's achievements:

- Established 2,044 rural industries in the targeted districts.
- Facilitated loans for 90 different rural trades.
- After 20 years, 89% of surveyed beneficiaries remain active in rural industry.
- Each industry employs an average of 2.3 individuals, generating approximately 4,700 jobs.
- The average turnover for surveyed rural industries was around Rs 16,31,735 in 2023, with a total estimated turnover exceeding Rs 300 crore across all units.
- Even after 20 years, beneficiaries recognized the benefits of the program.

### C. Baseline Survey for Tasar Project (Cognisphere Solutions):

The Tasar Project focused on the Asana and Arjuna plantations in the upland farms of tribal farmers in the Gumla district of Jharkhand and the Dindori district of Madhya Pradesh. The initiative emphasized the long-term benefits of carbon sequestration provided by Asana and Arjuna trees, while also highlighting the short-term potential for Tasar silkworm rearing. To ensure comprehensive community engagement, the project included a series of focus group discussions (FGDs) and household surveys aimed at capturing the socio-economic, cultural, agricultural, and forestry characteristics of the communities involved.





Our team conducting survey at Dindori district, Madhya Pradesh on Baseline Study of Tasar Project for CSL.



Our team conducting survey at Angara block for study on MFP Value Chain in Jharkhand for NABCONS



Our team conducting Baseline survey at Gumla district, Jharkhand on Solar based Irrigation System Project of SECI.



Our team conducting survey at Koderma District for Impact Assessment Study of Rural Industries Program of SIDBI.





# OUR FINANCIALS

| ISDG RESEARCH FOUNDATION<br>HOUSE NO-107/D, MANDIR MARG, ROAD NO-1<br>ASHOK NAGAR, RANCHI, JHARKHAND-834002 |          |                      |                       |
|-------------------------------------------------------------------------------------------------------------|----------|----------------------|-----------------------|
| Balance Sheet As On 31st March, 2024                                                                        |          |                      |                       |
| Particulars                                                                                                 | Note No. | Current Period (Rs.) | Previous Period (Rs.) |
| <b>A EQUITY AND LIABILITIES</b>                                                                             |          |                      |                       |
| <b>1 Shareholders' funds</b>                                                                                |          |                      |                       |
| (a) Share capital                                                                                           | 1        | 10,000.00            | 10,000.00             |
| (b) Reserves and surplus                                                                                    | 2        | 5,46,828.00          | 53,370.00             |
| (b) Money Received against share warrents                                                                   |          | -                    | -                     |
| <b>2 Share application money pending allotments</b>                                                         |          |                      |                       |
| <b>3 Non-current liabilities</b>                                                                            |          |                      |                       |
| (a) Long-term borrowings                                                                                    | 3        | -                    | -                     |
| (b) Deferred tax liabilities (net)                                                                          | 4        | -                    | -                     |
| (c) Other Long Term Liabilities                                                                             |          | -                    | -                     |
| (d) Long term provision                                                                                     |          | -                    | -                     |
| <b>4 Current liabilities</b>                                                                                |          |                      |                       |
| (a) Short Term Borrowings                                                                                   |          | -                    | -                     |
| (b) Trade payables                                                                                          |          | -                    | -                     |
| (A) total outstanding dues of micro enterprises and small enterprises                                       |          | -                    | -                     |
| (B) total outstanding dues of Creditors other than micro enterprises and small enterprises                  | 5        | 6,86,302.00          | 6,39,679.00           |
| (c) Other current liabilities                                                                               | 6        | 2,85,509.00          | 4,23,879.00           |
| (d) Short-term provisions                                                                                   | 7        | -                    | -                     |
| (e) Advance From Customer                                                                                   |          | -                    | -                     |
| <b>TOTAL</b>                                                                                                |          | <b>15,10,639.00</b>  | <b>11,26,928.00</b>   |
| <b>B ASSETS</b>                                                                                             |          |                      |                       |
| <b>1 Non-current assets</b>                                                                                 |          |                      |                       |
| (a) Property, Plant and Equipment and Intangible Assets                                                     |          |                      |                       |
| (i) Property, Plant and Equipment                                                                           | 8        | 1,34,282.90          | 88,192.00             |
| (ii) Intangible assets                                                                                      |          | -                    | -                     |
| (iii) Capital Work in progress                                                                              |          | -                    | -                     |
| (iv) Intangible Assets under Development                                                                    |          | -                    | -                     |
| (b) Non-current investments                                                                                 |          | -                    | -                     |
| (c) Deferred Tax Assets                                                                                     |          | -                    | -                     |
| (d) Long term loans and Advances                                                                            |          | -                    | -                     |
| (e) Other Non Current Assets                                                                                |          | -                    | -                     |
| <b>2 Current assets</b>                                                                                     |          |                      |                       |
| (a) Current Investments                                                                                     |          | -                    | -                     |
| (b) Inventories                                                                                             |          | -                    | -                     |
| (c) Trade receivables                                                                                       | 10       | 4,80,232.00          | 4,50,500.00           |
| (d) Cash and cash equivalents                                                                               | 11       | 2,19,924.00          | 2,70,460.00           |
| (e) Short-term loans and advances                                                                           |          | -                    | -                     |
| (f) Other Current Assets                                                                                    | 11       | 6,76,199.86          | 3,17,776.00           |
| <b>TOTAL</b>                                                                                                |          | <b>15,10,639.00</b>  | <b>11,26,928.00</b>   |

See accompanying notes forming part of the financial statements  
In terms of our report of even date attached.

For C K Prusty & Associates  
Chartered Accountants  
FRN: 323220E

ISDG RESEARCH FOUNDATION  
ISDG Research Foundation  
KUMAR DEVASHISH  
DIN-8406535  
Director

ISDG RESEARCH FOUNDATION  
ISDG Research Foundation  
SNEHA MISHRA  
DIN-8406535  
Director

CA Dharmendra Kumar Sinha  
Partner  
Membership No.412799  
UDIN(Section 8) :- 24412799BKEMVP9301  
UDIN (Form 10 BB) : 24412799BKEMVO9035  
Date : 20/09/2024  
Place: Ranchi

| ISDG RESEARCH FOUNDATION<br>HOUSE NO-107/D, MANDIR MARG, ROAD NO-1<br>ASHOK NAGAR, RANCHI, JHARKHAND-834002 |          |                       |                       |
|-------------------------------------------------------------------------------------------------------------|----------|-----------------------|-----------------------|
| STATEMENT OF PROFIT AND LOSS ACCOUNT FOR THE PERIOD 01st APRIL 2023 TO 31st MARCH 2024                      |          |                       |                       |
| Particulars                                                                                                 | Note No. | Current Period (Rs.)  | Previous Period (Rs.) |
| <b>I Revenue from operations (gross)</b>                                                                    | 12       | 1,80,71,604.44        | 1,07,68,178.47        |
| Less: Excise Duty                                                                                           |          | -                     | -                     |
| Revenue from operations (net)                                                                               |          | <b>1,80,71,604.44</b> | <b>1,07,68,178.47</b> |
| <b>II Other income</b>                                                                                      | 13       | 83,652.00             | 1,98,202.28           |
| <b>III Total Income (I+II)</b>                                                                              |          | <b>1,81,55,256.44</b> | <b>1,09,66,381.00</b> |
| <b>IV Expenses</b>                                                                                          |          |                       |                       |
| (a) Cost of materials consumed                                                                              |          | -                     | -                     |
| (b) Purchase of Stock in Trade                                                                              |          | -                     | -                     |
| (c) Changes in inventories of stock-in-trade                                                                | 14       | -                     | -                     |
| (d) Employee benefits expenses                                                                              | 15       | 13,50,000.00          | 4,55,916.00           |
| (e) Depreciation and amortisation expenses                                                                  | 8        | 16,705.69             | 9,953.00              |
| (f) Other expenses                                                                                          | 16       | 1,62,79,674.75        | 1,04,52,105.00        |
| <b>Total Expenses</b>                                                                                       |          | <b>1,76,46,380.44</b> | <b>1,09,17,974.00</b> |
| <b>V Profit before exceptional and extraordinary item and tax</b>                                           |          | <b>5,08,876.00</b>    | <b>48,407.00</b>      |
| <b>VI Exceptional items</b>                                                                                 |          | -                     | -                     |
| <b>VII Profit before extraordinary item and tax</b>                                                         |          | <b>5,08,876.00</b>    | <b>48,407.00</b>      |
| <b>VIII Extraordinary Items</b>                                                                             |          | -                     | -                     |
| <b>IX Profit before Tax</b>                                                                                 |          | <b>5,08,876.00</b>    | <b>48,407.00</b>      |
| <b>X Tax Expense:</b>                                                                                       |          | -                     | -                     |
| (a) Current tax expense                                                                                     |          | -                     | -                     |
| (b) Deferred tax                                                                                            |          | -                     | -                     |
| <b>XI Profit / (Loss) for the period from continuing operations</b>                                         |          | <b>5,08,876.00</b>    | <b>48,407.00</b>      |
| <b>XII Profit / (Loss) from discontinuing operations</b>                                                    |          | -                     | -                     |
| <b>XIII Tax from discontinuing operations</b>                                                               |          | -                     | -                     |
| <b>XIV Profit/ (Loss) from discontinuing operations</b>                                                     |          | -                     | -                     |
| <b>XV Profit/ (Loss) for the Period</b>                                                                     |          | <b>5,08,876.00</b>    | <b>48,407.00</b>      |
| <b>XVI Earning per equity share:</b>                                                                        |          |                       |                       |
| (1) Basic                                                                                                   |          | 50.89                 | 4.84                  |
| (2) Diluted                                                                                                 |          | 50.89                 | 4.84                  |

See accompanying notes forming part of the financial statements  
In terms of our report of even date attached.

For C K Prusty & Associates  
Chartered Accountants  
FRN: 323220E

ISDG RESEARCH FOUNDATION  
ISDG Research Foundation  
KUMAR DEVASHISH  
DIN-8406535  
Director

ISDG RESEARCH FOUNDATION  
ISDG Research Foundation  
SNEHA MISHRA  
DIN-8406535  
Director

CA Dharmendra Kumar Sinha  
Partner  
Membership No.412799  
UDIN(Section 8) :- 24412799BKEMVP9301  
UDIN (Form 10 BB) : 24412799BKEMVO9035  
Date : 20/09/2024  
Place: Ranchi

# TESTIMONIALS



## **Jaikaran Singh Kherwar**

*(Footkal Chaura Kisan Upyogkarta Samuh), Chingri*

Water is abundant now. We haven't faced any problem with water since last year when the pumps were installed. Our WUG has decided to efficiently share water. We run water for each beneficiary every week, about 2-3 times a week. Though it causes some friction sometimes, they manage, they have to if they want the water."



## **Anjani Devi**

*Farmer, Chingri village, Gumla district*

"I learned about the importance of soil and its health for the first time. I never cared for it before, we simply prepared the soil a little before sowing. But in Kisan Pathshala I learned about testing for soil. I have received a soil health card. I will ask Sahdeo ji to explain the results to me in the next pathshala session"



## **Jamuna Oraon**

*Farmer, Bishunpur village, Gumla District*

"I had planted mango plants that I had gotten myself, but most of them died under the heavy rains. But I also didn't know much about them. I am learning about proper crop spacing, staking of mango plants, and how frequently to irrigate. through FFS. All my new 50 plants look good so far."



## **Sabi Oraon**

*Farmer, Bishunpur-Karamtoli village, Gumla District*

"All the vegetable crops have been good. Especially my potato had a bumper production this year. They were as big as stones the size of a full palm. I have harvested 3.5 quintals so far. The price of potatoes was also good this month. I managed to pay the school fees dues for both my children with the income earned from the vegetable sale.

## **Sanjay Thakur**

*Agri Entrepreneur, Kurdeg Block, Simdega District*

"Sir taught us about market research, how to conduct it, how to read the results. So, after doing my market research I found there was only one barber in our village, and he was too old to be working all day. That is when I decided I will start a Salon. We prepared a business plan for loan approval with Tarun Sir's help.



## **Rasmaniya Rajwade**

*Farmer, Augustpur village, Surajpur District*

"I had received five goats and all of them are healthy so far. One of them had two lambs too. I learnt about proper feeding and housing in the training and try to do my best. I hope the herd grows steadily so I can start a goat rearing farming the future."



## **Sakal Singh**

*Farmer, Parshurampur village, Surajpur District*

"My watermelon had a bumper crop this time. I have already harvested above 15 quintals. It needed lot of hard work on the farm, but I hope it will cover my children's school fees when the school reopens next month after summer vacations."



## **Shalinder Oraon**

*Farmer, Bishunpur village, Gumla District*

"We used urea, DAP, in our farms. Everyone used them here. But now I am learning about bio-input preparation, Sahdeo ji taught and demonstrated in plastic drums. I am still learning, though it is simple, they use 3-4 ingredients, very inexpensive. I used some made by my neighbour in my fruit plants. I am planning to use them in my apple plants now."





We operate within a legal framework that ensures transparency, accountability, and responsible conduct of our mission. By operating within a strong legal framework and staying true to our guiding principles, we aim to build a more just and equitable future for all.

|                           |                                                                      |
|---------------------------|----------------------------------------------------------------------|
| Name                      | ISDG RESEARCH FOUNDATION                                             |
| INCORPORATION DATE        | 09/05/2019                                                           |
| CIN                       | U85320JH2019NPL012939                                                |
| ROC Code                  | RoC-Jharkhand                                                        |
| Registration No           | 012939                                                               |
| Category                  | Non-govt company (Section 8)                                         |
| Date of Incorporation     | 09/05/2019                                                           |
| PAN                       | AAFCI2770M                                                           |
| TAN                       | RCHI00647D                                                           |
| GSTIN                     | 20AAFCI2770MIZL                                                      |
| NGO Darpan (NITI Ayog) ID | JH/2020/0266538                                                      |
| CSR I Reg                 | CSR00033785                                                          |
| 12A URN                   | AAFCI2770M23PT01                                                     |
| 80G URN                   | AAFCI2770M23PT02                                                     |
| Address                   | House No-107/D, Mandir Marg, Road no-1, Ashok Nagar, Ranchi - 834002 |
| Website                   | www.isdgfoundation.org                                               |

## हिन्दुस्त

### गुमला के चिंगरी ग्राम में किसान संवाद आयोजित

गुमला। कृषि कार्यों में नवाचार, सहकार और स्वयंसेवा के माध्यम से ग्रामीण क्षेत्रों में उत्पादकता और आय वृद्धि कर पलायन रोकने के विषय पर रविचार विशुनपुर प्रखंड के चिंगरी में किसान संवाद का आयोजन हुआ। कार्यक्रम के प्रारम्भ में अमर सहोदर जतरा टाना भगत को ब्रह्मजलि अर्पित की गयी।

भारत सरकार की संस्था सोलर एनर्जी कार्पोरेशन ऑफ इंडिया लिमिटेड (सेकी) के सहयोग से आईएसडीजी रिसर्च फाउंडेशन द्वारा विशुनपुर, सेरका, चिंगरी और चिपरी गांव में 13 सौर ऊर्जा आधारित सिंचाई व्यवस्था स्थापित की गयी है।

#### कृषि व्यवस्था की दी गई जानकारी

इन सिंचाई केंद्रों के आधर पर किसानों के कुल 13 उपयोगकर्ता समूह गठन किए गए हैं, जिनमें लगभग 150 किसान जुड़े हैं। आयोजित संवाद में किसानों एवं पंचायत प्रतिनिधियों ने क्षेत्र की कृषि व्यवस्था, प्रचलित व्यवहार व अपेक्षाओं पर प्रकाश डाला। वरिष्ठ समाजसेवी और ग्रामीण विकास जानकार हलधर महतो ने गांवों में परिणाम मूलक कृषि विस्तार के लिए ग्राम सभा और किसान फाउंडेशन को जोड़ने पर बल दिया। उद्यमिता विशेषज्ञ डॉ अरुण केशव ने बताया कि सरकार के माध्यम से वित्तीय समर्थन और विपणन की व्यवस्था कर किसान आर्थिक समृद्धि पा सकते हैं। संस्था के निदेशक कुमार देवशीव ने कहा कि स्थानीय किसानों के नेतृत्व में उन्नत कृषि, व्यवहार परिवर्तन, तकनीक सूक्ष्म सिंचाई, उपयोगी फसलें, मोटे अनाज, पैदावारित खेती, जैविक खेती के माध्यम से हम व्यापक परिवर्तन ला सकते हैं। विशुनपुर के मुखिया रामप्रसाद बड़ाईक ने किसानों को समूह बना कर खेती करने और नवाचार आनाने पर बल दिया। पूरे कार्यक्रम में किसानों ने बड़ चढ़ कर भाग लिया। संवाद में आशीष बर्मन, आनोक लकरा, अजीत उरांव, अखिल रौनियार, रितम दास, सहदेव साहू, नीरज गोप ने महत्वपूर्ण भूमिका निभायी।

### अगस्तपुर में बकरी स्वास्थ्य जांच शिविर



रामानुजनगर (अम्बिकावाणी समाचार)। विकासखंड के गांव अगस्तपुर में जिला पशुपालन विभाग द्वारा बकरी स्वास्थ्य जांच शिविर का आयोजन किया गया। शिविर का संचालन डॉक्टर सविता साहू और उनके सहयोगी ने किया। अगस्तपुर गांव में कई लाभुकों को आजीविका संवर्धन हेतु ओएनजीसी के मद से एक बकरा और चार

बकरी की इकाइयां प्रदान की गई है। बकरियों के निवमित जांच के लिए यह शिविर आयोजन किया गया है। कृषकों ने अपनी बकरियों का इसमें इलाज करवाया और इस शिविर का लाभ उठाया। विकास सहयोगी विजय राजवाड़े और स्थानीय कार्यकर्ताओं ने इसमें बड़ चढ़ चलकर भाग लिया।

## हि हिन्दुस्तान

Newsrap • विनूपन टैप गुला  
Mon, 04 Sep 2023 01:10 AM



गुमला संवाददाता  
कृषि कार्यों में नवाचार, सहकार और स्वयंसेवा के माध्यम से ग्रामीण क्षेत्रों में उत्पादकता और आय वृद्धि कर पलायन रोकने के विषय पर रविचार विशुनपुर प्रखंड के चिंगरी में किसान संवाद का आयोजन हुआ। कार्यक्रम के प्रारम्भ में अमर सहोदर जतरा टाना भगत को ब्रह्मजलि अर्पित की गयी। भारत सरकार की संस्था सोलर एनर्जी कार्पोरेशन ऑफ इंडिया लिमिटेड (सेकी) के सहयोग से आईएसडीजी रिसर्च फाउंडेशन द्वारा विशुनपुर, सेरका, चिंगरी और चिपरी गांव में 13 सौर ऊर्जा आधारित सिंचाई व्यवस्था स्थापित की गयी है। इन सिंचाई केंद्रों के आधर पर किसानों के कुल 13 उपयोगकर्ता समूह गठन किए गए हैं, जिनमें लगभग 150 किसान जुड़े हैं। आयोजित संवाद में किसानों एवं पंचायत प्रतिनिधियों ने क्षेत्र की कृषि व्यवस्था, प्रचलित व्यवहार व अपेक्षाओं पर प्रकाश डाला। वरिष्ठ समाजसेवी और ग्रामीण विकास जानकार हलधर महतो ने गांवों में परिणाम मूलक कृषि विस्तार के लिए ग्राम सभा और किसान फाउंडेशन को जोड़ने पर बल दिया। उद्यमिता विशेषज्ञ डॉ अरुण केशव ने बताया कि सरकार के माध्यम से वित्तीय समर्थन और विपणन की व्यवस्था कर किसान आर्थिक समृद्धि पा सकते हैं। संस्था के निदेशक कुमार देवशीव ने कहा कि स्थानीय किसानों के नेतृत्व में उन्नत कृषि, व्यवहार परिवर्तन, तकनीक सूक्ष्म सिंचाई, उपयोगी फसलें, मोटे अनाज, पैदावारित खेती, जैविक खेती के माध्यम से हम व्यापक परिवर्तन ला सकते हैं। विशुनपुर के मुखिया रामप्रसाद बड़ाईक ने किसानों को समूह बना कर खेती करने और नवाचार आनाने पर बल दिया। पूरे कार्यक्रम में किसानों ने बड़ चढ़ कर भाग लिया। संवाद में आशीष बर्मन, आनोक लकरा, अजीत उरांव, अखिल रौनियार, रितम दास, सहदेव साहू, नीरज गोप ने महत्वपूर्ण भूमिका निभायी।

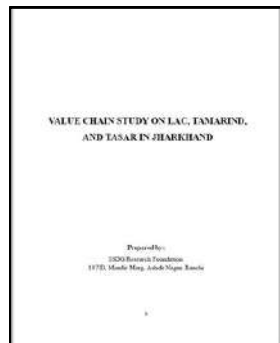
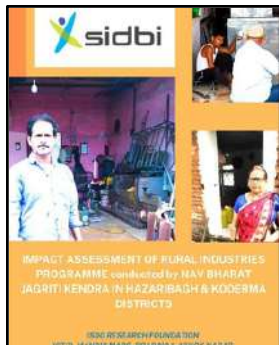
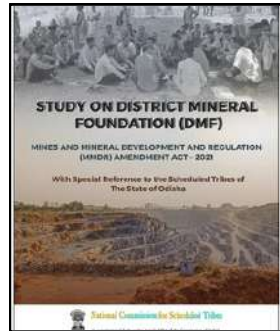
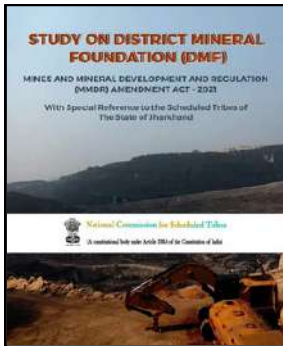
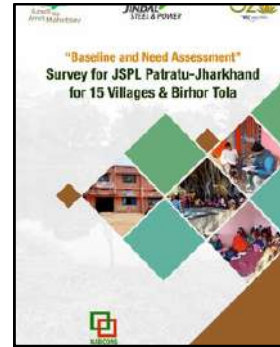
एन हिन्दुस्तान संवाद की अतिथिगत सूत्र चित्र है, इसे एन हिन्दुस्तान की टैप में समाहित नहीं किया है।

### जैविक खेती से संबंधित प्रशिक्षण दिया गया



विशुनपुर, प्रखंड के चिंगरी गांव में भारत सरकार के उपक्रम सोलर एनर्जी कार्पोरेशन ऑफ इंडिया लिमिटेड नयी दिल्ली व रांची की सामाजिक संस्था आइएसडीजी रिसर्च फाउंडेशन के संयुक्त तत्वावधान में किसानों को आय वर्धन के लिए जैविक खेती के संबंध में प्रशिक्षण दिया गया, इसमें महिला किसानों समेत 111 किसानों ने बड़-चढ़ कर भाग लिया, कार्यक्रम में राजधानी रांची के ओरमांडी प्रखंड के प्रशिक्षक बैजनाथ महतो व प्रकाश कुमार चौधरी ने जैविक खेती की संपूर्ण विधि, जैविक खाद निर्माण, कीट प्रबंधन, जैविक खेती के लाभ, टापक सिंचाई, रासायनिक खाद का बहिष्कार व जैविक खेती से अधिक आय अर्जन के तरीकों पर विस्तार रूप से जानकारी दी गयी। मौके पर आइएसडीजी रिसर्च फाउंडेशन रांची के परियोजना प्रबंधक आशीष बर्मन, सहायक प्रबंधक रीतम दास, अजीत उरांव, सहदेव साहू, नीरज गोप मौजूद थे।

# OUR PUBLICATIONS



# OUR PARTNERS





# OUR EFFORTS & SUSTAINABLE DEVELOPMENT GOALS



Our Philosophy of “Sustainability through Inclusion” motivates us to align our efforts with the UN SDGs



**ISDG RESEARCH FOUNDATION**

107/D, MANDIR MARG, ASHOK NAGAR, RANCHI, 834002

[www.isdgfoundation.org](http://www.isdgfoundation.org)